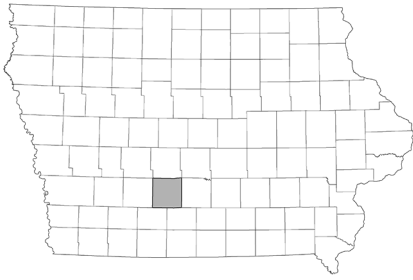


# Data for Decision Makers



## City Profile Truro, Iowa

report created: 11/13/2018

### Population Profile

The 2017 population estimate for Truro is 499. Between 2010 and 2017 the population increased by 2.7%. The City of Truro is in Madison County. Madison County saw a 2.1% population increase between 2010 and 2017. Truro's population is predominantly White. Between 2000 and 2010 there was a slight increase in the percent of White population.

#### Total Population

	2000 <sup>1</sup>	2010 <sup>1</sup>	2017 <sup>2</sup>
Truro	427	486	499
Male	203	232	Not Available*
Female	224	253	Not Available*
Madison County	14,019	15,679	16,013
State of Iowa	2,926,324	3,046,355	3,145,711

\* population estimates by sex not provided at the city level

#### Percentage of Population by Race/Hispanic Origin<sup>1</sup>

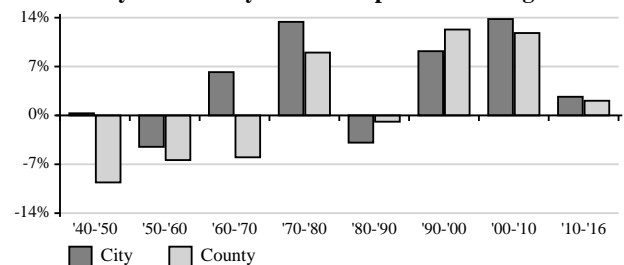
Race Groups	City		County	
	2000	2010	2000	2010
One Race Only	99.1%	99.4%	99.3%	99.1%
White	97%	98.4%	98.6%	98.1%
White Alone, Not Hispanic	97%	98.1%	98.2%	97.2%
Black or African American	0%	0%	0.1%	0.3%
Asian	0%	0.4%	0.2%	0.3%
American Indian or Alaska Native	2.1%	0.4%	0.3%	0.2%
Hawaiian or Pacific Islander	0%	0%	0%	0%
Other	0%	0.2%	0.2%	0.2%
Two or more races	0.9%	0.6%	0.7%	0.9%
Hispanic origin*	1.9%	0.2%	0.7%	1.3%

\* Hispanics can be of any race.

#### Neighboring Cities - Percent Population Change

	'90 <sup>1</sup> -'00 <sup>1</sup>	'00 <sup>1</sup> -'10 <sup>1</sup>	'10 <sup>1</sup> -'17 <sup>2</sup>
East Peru	15.91%	-18.30%	4.00%
New Virginia	8.31%	4.26%	0.20%
Patterson	-1.56%	16.67%	10.20%
St. Charles	15.64%	4.51%	-4.31%
St. Marys	18.58%	-5.97%	-2.38%
Truro	9.21%	13.82%	2.67%
Madison County	12.30%	11.84%	2.13%
State of Iowa	5.39%	4.10%	3.26%

#### City and County Percent Population Change



#### Regional Director

Andrea Nelson  
1625 Adventureland Dr  
Altoona, IA 50009  
nelsonar@iastate.edu  
515-957-5775

#### County Office

Brooke Blessington  
117 N John Wayne Dr  
Winterset, IA 50273  
bbless@iastate.edu  
515-462-1001

<http://indicators.extension.iastate.edu>

# Demographic Profile

# Truro, Iowa

The City of Truro, compared to Madison County, had a higher percentage of young people (17 or younger) and a lower percentage of older people (65 and older) in 2010. Population pyramids<sup>6</sup> visually graph the age-sex composition of the population for Truro and Madison County. Each bar represents the percent of the total population for each age-sex group.

**Households and Families by Type<sup>1</sup>**

	City		County	
	2000	2010	2000	2010
Total Households	156	163	5,326	6,025
Family Households	74.4%	74.8%	73.7%	73.2%
With Children	39.1%	49.7%	34.8%	33.6%
Married-couple	59%	57.1%	63.9%	62.3%
With Children	30.8%	35%	28.5%	26.7%
Female Householder <sup>a</sup>	9.6%	11%	7%	7.3%
With Children	6.4%	8.6%	4.7%	4.7%
Male Householder <sup>b</sup>	5.8%	6.7%	2.8%	3.6%
With Children	1.9%	6.1%	1.6%	2.2%
Nonfamily Households	25.6%	25.2%	26.3%	26.8%
Householder Living Alone	22.4%	23.3%	22.7%	23%
Householder Not Living Alone	3.2%	1.9%	3.6%	3.8%
Households With Under 18 <sup>c</sup>	44.9%	53.4%	36.6%	35.6%
Households With 65+ <sup>d</sup>	29.5%	21.5%	25.9%	25.6%
Average Household Size	2.74	2.98	2.58	2.57

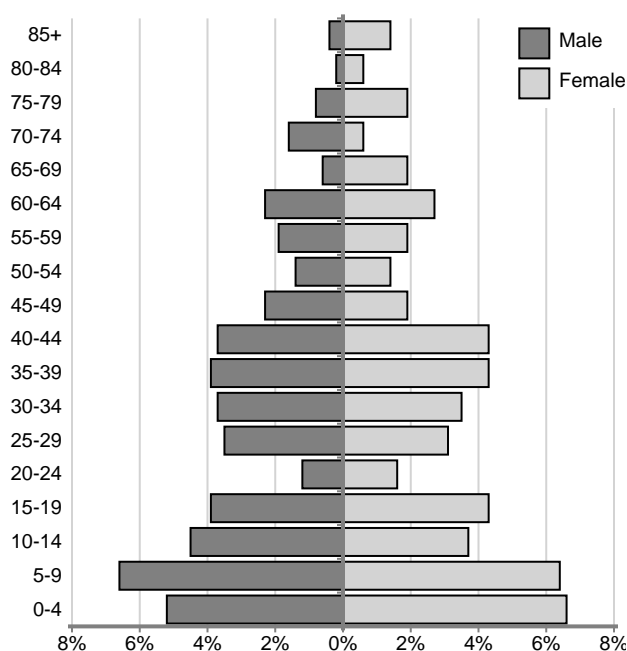
<sup>a</sup>No husband present, <sup>b</sup>No wife present <sup>c</sup>Households with individuals under 18 years <sup>d</sup>Households with individuals 65 years and over

**Percentage of Population by Age<sup>1</sup>**

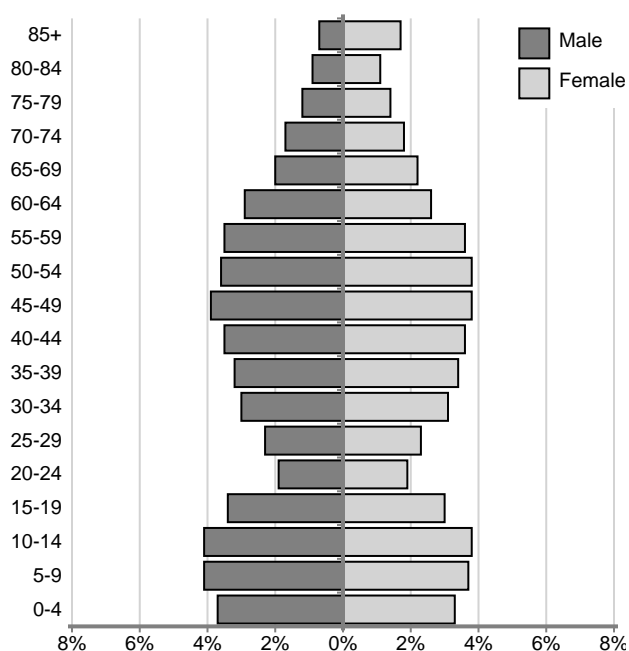
Age Groups	City		County	
	2000	2010	2000	2010
17 or younger	34.0%	38.8%	27.1%	27.2%
0 - 4	8.9%	11.8%	14.4%	14.8%
5 - 9	12.9%	13.0%	7.4%	7.8%
10 - 14	7.7%	8.2%	7.9%	7.9%
15 - 17	4.5%	5.8%	5.3%	4.6%
18 - 24	6.3%	5.4%	6.9%	5.7%
25 - 44	27.4%	30.1%	27.4%	24.5%
45 - 64	17.8%	15.7%	23.4%	27.8%
65 or older	14.5%	10.1%	15.2%	14.8%
65 - 84	12.9%	8.2%	12.4%	12.4%
85 or older	1.6%	1.9%	2.8%	2.4%
Median Age (years) <sup>4</sup>	33.1	29.6	37.9	39.8
Age Dependency <sup>5</sup>	94.2	95.7	73.3	72.4
Old-Age	28.2	19.8	26.3	25.5
Child	66.0	75.9	47.0	46.9

<sup>5</sup>Age Dependency Ratio

**Truro, Iowa Population Pyramid, 2010<sup>1,6</sup>**



**Madison County Population Pyramid, 2010<sup>1,6</sup>**



The median<sup>4</sup> household income in Truro is less than the median household income of Madison County. The median value of owner-occupied housing units is lower in Truro than for Madison County. There's a higher percentage of vacant housing units in Truro than there is for Madison County. Many housing units in Truro were built prior to 1939. There is a lower percentage of individuals 25 and older with a Bachelor's degree or higher in Truro compared to Madison County.

**Median Household and Per Capita Income, 2012-2016<sup>3</sup>**

	City		County	
	Estimate	MOE*	Estimate	MOE*
Total Households	159	+/- 28	6,260	+/- 154
Less than \$34,999	30.8%	+/- 4.9%	25.9%	+/- 2.9%
\$35,000 To \$49,999	15.1%	+/- 7.5%	13.2%	+/- 2.6%
\$50,000 To \$99,999	46.0%	+/- 4.0%	38.0%	+/- 2.3%
\$100,000 Or More	8.2%	+/- 5.4%	22.8%	+/- 2.3%
Median Household Income <sup>4</sup>	\$51,161	+/- \$5,250	\$60,326	+/- \$4,046
Median Family Income <sup>4</sup>	\$60,500	+/- \$8,453	\$70,280	+/- \$2,873
Per Capita Income	\$19,160	+/- \$2,303	\$29,430	+/- \$1,660

**Housing Characteristics, 2012-2016<sup>3</sup>**

	City		County	
	Estimate	MOE*	Estimate	MOE*
Total Units	185	+/- 29	6,679	+/- 67
Vacant	14.1%	+/- 7.4%	6.3%	+/- 2.3%
Occupied	85.9%	+/- 7.4%	93.7%	+/- 2.3%
Occupied <sup>a</sup>	159	+/- 28	6,260	+/- 154
Owner	68.6%	+/- 9.8%	77.0%	+/- 2.6%
Renter	31.4%	+/- 9.8%	23.0%	+/- 2.6%
Rent <sup>b,4</sup>	\$750	+/- \$73	\$826	+/- \$88
Value <sup>c,4</sup>	\$104,600	+/- \$9,111	\$163,000	+/- \$6,753

<sup>a</sup>Occupied Units, <sup>b</sup>Median gross rent of renter-occupied units, <sup>c</sup>Median value of owner-occupied units

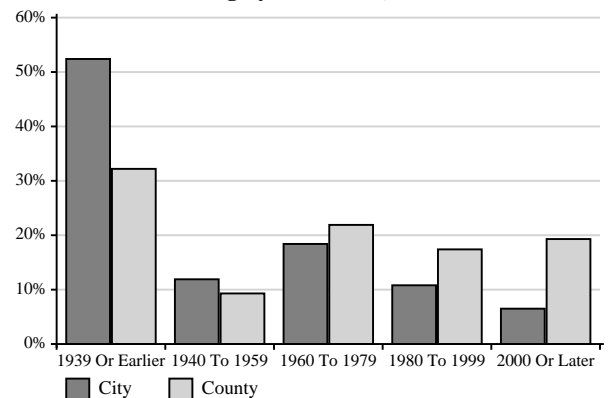
**Educational Attainment, 2012-2016<sup>3</sup>**

	City		County	
	Estimate	MOE*	Estimate	MOE*
Population 25 and older	245	+/-47	10,603	+/-30
High School Graduate or Higher	92.2%	+/-5.1%	94.4%	+/-1.4%
Bachelor's Degree or Higher	**%	+/-**%	22.5%	+/-2.6%

\*MOE = the margin of error for American Community Survey estimates<sup>3</sup> which is a numerical value that when added to or subtracted from the point estimate value gives the range of a 90% confidence interval around the estimate.

\*\*MOE is high, use county estimate.

**Percent Housing by Year Built, 2012-2016<sup>3</sup>**



In Truro there is a higher percentage of workers in sales and office occupations than any other occupation category. The production, transportation, and material moving occupation category makes up 14.3% of occupations of the civilian employed population in the city.

**Occupation of the Civilian Employed Population, 2012-2016<sup>3</sup>**

	City		County	
	Estimate	MOE*	Estimate	MOE*
Civilian employed population 16 years and over	210	+/- 52	7,860	+/- 273
Management, business, science, and arts	23.8%	+/- 9.8%	37.8%	+/- 3.5%
Service	**%	+/- **%	12.9%	+/- 2.0%
Sales and office	38.1%	+/- 9.6%	21.3%	+/- 2.5%
Natural resources, construction, and maintenance	13.8%	+/- 6.7%	14.6%	+/- 2.5%
Production, transportation, and material moving	14.3%	+/- 6.3%	13.3%	+/- 2.6%

Truro has a higher proportion of the population age 16 or older in the labor force than Madison County. A portion of those who are not in the labor force are people who are retired. Earnings data are provided for the population 16 and over who have earnings. Median<sup>4</sup> earnings in Truro tend to be lower than the median earnings for Madison County. Families with children tend to have a higher rate of poverty than families without children.

**Median Employment Earnings, 2012-2016<sup>3</sup>**

	City		County	
	Estimate	MOE*	Estimate	MOE*
Population 16+ <sup>a</sup>	239	+/- 55	8,936	+/- 231
Median Earnings	\$26,875	+/- \$7,714	\$36,293	+/- \$1,181
Female	\$20,000	+/- \$4,954	\$30,123	+/- \$3,801
Female, full time <sup>b</sup>	\$29,750	+/- \$7,876	\$42,062	+/- \$2,915
Male	\$37,031	+/- \$9,439	\$42,341	+/- \$2,958
Male, full time <sup>b</sup>	\$39,688	+/- \$17,759	\$47,435	+/- \$4,075

<sup>a</sup> with earnings, <sup>b</sup> year round, **\*\*MOE is high, use county estimate.**

**Disability Status and Health Insurance Coverage of the Civilian Noninstitutionalized Population, 2012-2016<sup>3</sup>**

	City		County	
	Estimate	MOE*	Estimate	MOE*
Population <sup>a</sup>	456	+/-96	15,475	+/-92
With a disability <sup>b</sup>	9.6%	+/-6.0%	12.3%	+/-1.7%
With Health Insurance	90.1%	+/-5.6%	94.4%	+/-1.2%
With Private <sup>c</sup> Coverage	69.1%	+/-7.9%	81.1%	+/-2.6%
With Public <sup>d</sup> Coverage	37.1%	+/-10.3%	27.7%	+/-2.5%
No Health Insurance	9.9%	+/-5.6%	5.6%	+/-1.2%

<sup>a</sup>Civilian Noninstitutionalized Population, <sup>b</sup>limitations of activities or inability for full participation, <sup>c</sup>provided by employer, union, bought by individual, and some military plans, <sup>d</sup>includes Medicare, Medicaid, VA Health Care, children's CHIP, and some state plans, **\*\*MOE is high, use county estimate.**

**Employment Status, 2012-2016<sup>3</sup>**

	City		County	
	Estimate	MOE*	Estimate	MOE*
Population 16+	319	+/- 64	12,071	+/- 85
in labor force	70.5%	+/- 7.3%	68.5%	+/- 2.1%
not in labor force	29.5%	+/- 7.3%	31.5%	+/- 2.1%
Civilian labor force	225	+/- 56	8,253	+/- 252
Unemployed	**%	+/- **%	4.8%	+/- 1.6%

**\*\*MOE is high, use county estimate.**

**Individuals and Families Below Poverty Level, 2012-2016<sup>3</sup>**

	City		County	
	Estimate	MOE*	Estimate	MOE*
Total Population <sup>a</sup>	456	+/-96	15,431	+/-104
Below poverty	13.4%	+/-7.2%	6.8%	+/-1.9%
17 and under	**%	+/-**%	5.4%	+/-2.6%
18 - 64	**%	+/-**%	6.8%	+/-2.2%
65+	**%	+/-**%	9.5%	+/-4.5%
All Families	**%	+/-**%	3.6%	+/-1.3%
with children	**%	+/-**%	**%	+/-**%
Married Couple	**%	+/-**%	2.8%	+/-1.2%
with children	**%	+/-**%	**%	+/-**%
Female HH <sup>b</sup>	**%	+/-**%	**%	+/-**%
with children	**%	+/-**%	**%	+/-**%

<sup>a</sup> for whom poverty status is determined, <sup>b</sup> female householder, no husband present, **\*\*MOE is high, use county estimate.**

**This series was prepared by:**

Christopher J. Seeger, Professor & Extension Specialist  
 Bailey Hanson, Systems Analyst II & Extension Specialist  
 Sandra Burke, Assistant Scientist III & Extension Specialist

For more information on these and other topics, please call the Extension and Outreach specialists listed on the cover page or visit the ISU Extension and Outreach Indicators Portal at [indicators.extension.iastate.edu](http://indicators.extension.iastate.edu)

Iowa State University Extension and Outreach does not discriminate on the basis of age, disability, ethnicity, gender identity, genetic information, marital status, national origin, pregnancy, race, religion, sex, sexual orientation, socioeconomic status, or status as a U.S. veteran. (Not all prohibited bases apply to all programs.) Inquiries regarding non-discrimination policies may be directed to Ross Wilburn, Diversity Officer, 2150 Beardshear Hall, 515 Morrill Road, Ames, Iowa 50011, 515-294-1482, wilburn@iastate.edu.

**Information in this document was derived from:**

- <sup>1</sup> U.S. Census Bureau; Decennial Census 1990, 2000, 2010 Summary File 1
- <sup>2</sup> U.S. Census Bureau; Population Estimates Program 2016
- <sup>3</sup> U.S. Census Bureau; American Community Survey, 2012-2016
- <sup>4</sup> Median is the middle value of a distribution.
- <sup>5</sup> Compares, those typically not in the labor force with those typically in the labor force. Old Age dependency is persons 65+ per 100 persons age 18-64. Child dependency is persons under age 18 per 100 persons age 18-64. The total age dependency ratio is persons under age 18 plus persons 65 or older per 100 persons age 18-64.
- <sup>6</sup> Population Pyramids represent the age-sex composition of a population. Bars may be missing if particular age-sex groups are missing from the population.