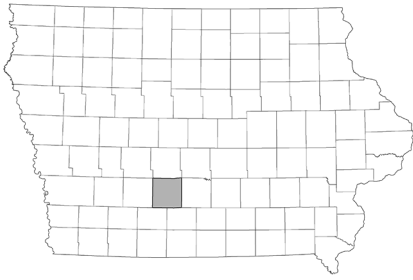


# Data for Decision Makers



## City Profile Patterson, Iowa

report created: 12/07/2020

### Population Profile

The 2018 population estimate for Patterson is 162. Between 2010 and 2018 the population increased by 24.6%. The City of Patterson is in Madison County. Madison County saw a 3.4% population increase between 2010 and 2018. Patterson's population is predominantly White. Between 2000 and 2010 there was a slight decrease in the percent of White population.

#### Total Population

|                | 2000 <sup>1</sup> | 2010 <sup>1</sup> | 2018 <sup>2</sup> |
|----------------|-------------------|-------------------|-------------------|
| Patterson      | 126               | 130               | 162               |
| Male           | 71                | 68                | Not Available*    |
| Female         | 55                | 62                | Not Available*    |
| Madison County | 14,019            | 15,679            | 16,206            |
| State of Iowa  | 2,926,324         | 3,046,355         | 3,156,145         |

\* population estimates by sex not provided at the city level

#### Percentage of Population by Race/Hispanic Origin<sup>1</sup>

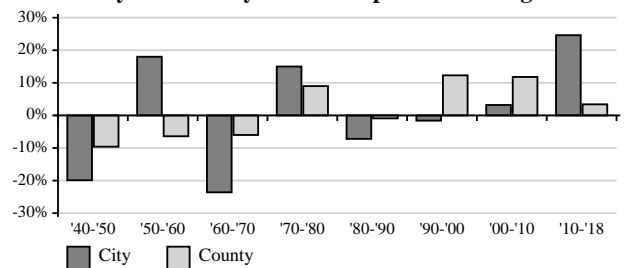
| Race Groups                      | City |       | County |       |
|----------------------------------|------|-------|--------|-------|
|                                  | 2000 | 2010  | 2000   | 2010  |
| One Race Only                    | 100% | 100%  | 99.3%  | 99.1% |
| White                            | 100% | 99.2% | 98.6%  | 98.1% |
| White Alone, Not Hispanic        | 100% | 99.2% | 98.2%  | 97.2% |
| Black or African American        | 0%   | 0%    | 0.1%   | 0.3%  |
| Asian                            | 0%   | 0%    | 0.2%   | 0.3%  |
| American Indian or Alaska Native | 0%   | 0%    | 0.3%   | 0.2%  |
| Hawaiian or Pacific Islander     | 0%   | 0.8%  | 0%     | 0%    |
| Other                            | 0%   | 0%    | 0.2%   | 0.2%  |
| Two or more races                | 0%   | 0%    | 0.7%   | 0.9%  |
| Hispanic origin*                 | 0%   | 0%    | 0.7%   | 1.3%  |

\* Hispanics can be of any race.

#### Neighboring Cities - Percent Population Change

|                | '90 <sup>1</sup> -'00 <sup>1</sup> | '00 <sup>1</sup> -'10 <sup>1</sup> | '10 <sup>1</sup> -'18 <sup>2</sup> |
|----------------|------------------------------------|------------------------------------|------------------------------------|
| Bevington      | -13.43%                            | 8.62%                              | 9.52%                              |
| Martensdale    | -4.89%                             | -0.43%                             | 0.43%                              |
| St. Charles    | 15.27%                             | 5.49%                              | -4.90%                             |
| St. Marys      | 18.58%                             | -5.22%                             | -1.57%                             |
| Winterset      | 13.63%                             | 8.85%                              | 2.25%                              |
| Patterson      | -1.56%                             | 3.17%                              | 24.62%                             |
| Madison County | 12.30%                             | 11.84%                             | 3.36%                              |
| State of Iowa  | 5.39%                              | 4.10%                              | 3.60%                              |

#### City and County Percent Population Change



#### Regional Director

Brooke Blessington  
200 W 2nd Avenue, Suite A  
Indianola, IA 50125  
bbless@iastate.edu  
515-961-6237

#### County Office

Brooke Blessington  
117 N John Wayne Dr  
Winterset, IA 50273  
bbless@iastate.edu  
515-462-1001

<http://indicators.extension.iastate.edu>

The City of Patterson, compared to Madison County, had a lower percentage of young people (17 or younger) and a higher percentage of older people (65 and older) in 2010. Population pyramids<sup>6</sup> visually graph the age-sex composition of the population for Patterson and Madison County. Each bar represents the percent of the total population for each age-sex group.

**Households and Families by Type<sup>1</sup>**

|                                 | City  |       | County |       |
|---------------------------------|-------|-------|--------|-------|
|                                 | 2000  | 2010  | 2000   | 2010  |
| Total Households                | 58    | 57    | 5,326  | 6,025 |
| Family Households               | 58.6% | 64.9% | 73.7%  | 73.2% |
| Married-couple                  | 51.7% | 47.4% | 63.9%  | 62.3% |
| With Children                   | 17.2% | 17.5% | 28.5%  | 26.7% |
| Female Householder <sup>a</sup> | 3.4%  | 7%    | 7%     | 7.3%  |
| With Children                   | 1.7%  | 3.5%  | 4.7%   | 4.7%  |
| Male Householder <sup>b</sup>   | 3.5%  | 10.5% | 2.8%   | 3.6%  |
| With Children                   | 1.8%  | 7%    | 1.6%   | 2.2%  |
| Nonfamily Households            | 41.4% | 35.1% | 26.3%  | 26.8% |
| Householder Living Alone        | 27.6% | 29.8% | 22.7%  | 23%   |

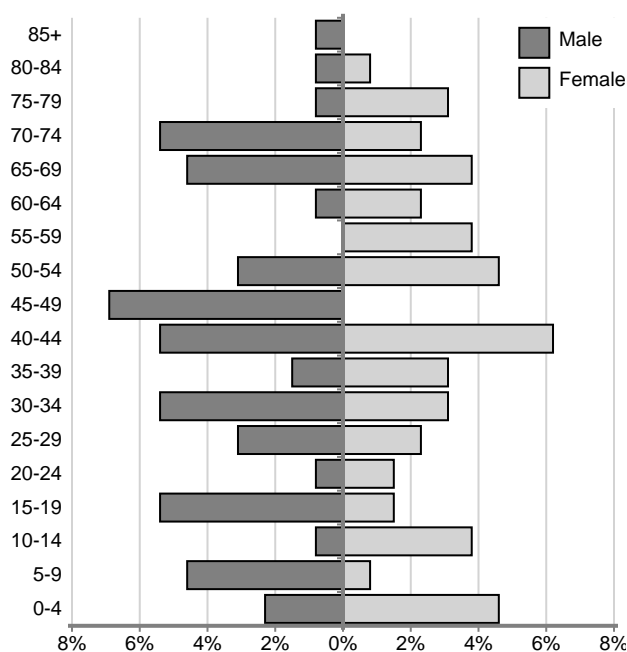
<sup>a</sup> No husband present, <sup>b</sup> No wife present

**Percentage of Population by Age<sup>1</sup>**

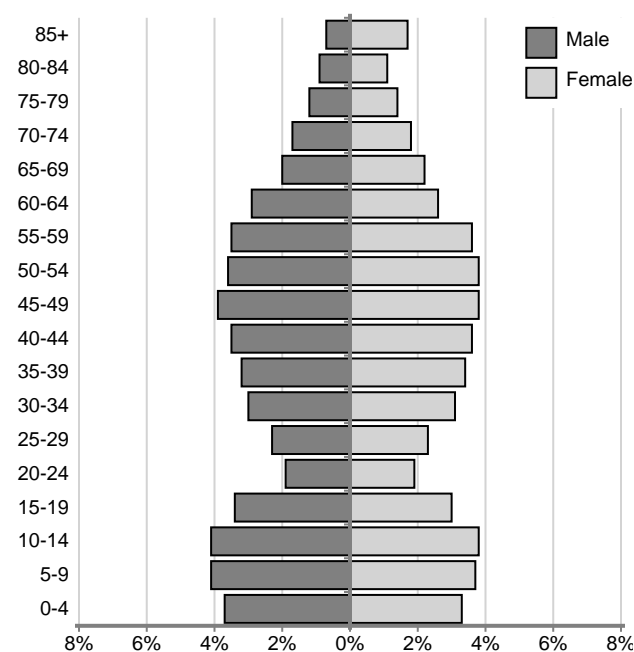
| Age Groups                      | City  |       | County |       |
|---------------------------------|-------|-------|--------|-------|
|                                 | 2000  | 2010  | 2000   | 2010  |
| 17 or younger                   | 16.7% | 22.3% | 27.1%  | 27.2% |
| 18 - 24                         | 12.7% | 3.8%  | 6.9%   | 5.7%  |
| 25 - 44                         | 24.6% | 30.0% | 27.4%  | 24.5% |
| 45 - 64                         | 34.1% | 21.5% | 23.4%  | 27.8% |
| 65 or older                     | 11.9% | 22.3% | 15.2%  | 14.8% |
| 85 or older                     | 0.0%  | 0.8%  | 2.8%   | 2.4%  |
| Median Age (years) <sup>4</sup> | 41.7  | 43.0  | 37.9   | 39.8  |
| Age Dependency <sup>5</sup>     | 40.1  | 80.5  | 73.3   | 72.4  |
| Old-Age                         | 16.7  | 40.3  | 26.3   | 25.5  |
| Child                           | 23.4  | 40.3  | 47.0   | 46.9  |

<sup>5</sup>Age Dependency Ratio

**Patterson, Iowa Population Pyramid, 2010<sup>1,6</sup>**



**Madison County Population Pyramid, 2010<sup>1,6</sup>**



**This series was prepared by:**

Christopher J. Seeger, Professor & Extension Specialist  
 Bailey Hanson, Systems Analyst II & Extension Specialist  
 Sandra Burke, Assistant Scientist III & Extension Specialist

For more information on these and other topics, please call the Extension and Outreach specialists listed on the cover page or visit the ISU Extension and Outreach Indicators Portal at [indicators.extension.iastate.edu](http://indicators.extension.iastate.edu)

**Information in this document was derived from:**

- <sup>1</sup> U.S. Census Bureau; Decennial Census 1990, 2000, 2010 Summary File 1
- <sup>2</sup> U.S. Census Bureau; Population Estimates Program 2018
- <sup>3</sup> U.S. Census Bureau; American Community Survey, 2014-2018
- <sup>4</sup> Median is the middle value of a distribution.
- <sup>5</sup> Compares, those typically not in the labor force with those typically in the labor force. Old Age dependency is persons 65+ per 100 persons age 18-64. Child dependency is persons under age 18 per 100 persons age 18-64. The total age dependency ratio is persons under age 18 plus persons 65 or older per 100 persons age 18-64.
- <sup>6</sup> Population Pyramids represent the age-sex composition of a population. Bars may be missing if particular age-sex groups are missing from the population.

Iowa State University Extension and Outreach does not discriminate on the basis of age, disability, ethnicity, gender identity, genetic information, marital status, national origin, pregnancy, race, color, religion, sex, sexual orientation, socioeconomic status, or status as a U.S. veteran, or other protected classes. (Not all prohibited bases apply to all programs.) Inquiries regarding non-discrimination policies may be directed to the Diversity Advisor, 2150 Beardshear Hall, 515 Morrill Road, Ames, Iowa 50011, 515-294-1482, [extdiversity@iastate.edu](mailto:extdiversity@iastate.edu). All other inquiries may be directed to 800-262-3804.