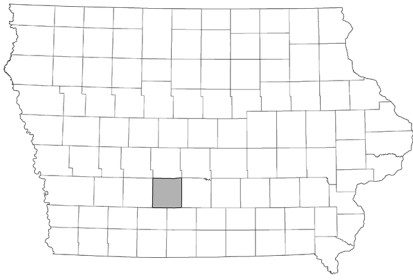


Data for Decision Makers



City Profile Winterset, Iowa

report created: 11/18/2020

Population Profile

The 2018 population estimate for Winterset is 5,307. Between 2010 and 2018 the population increased by 2.3%. The City of Winterset is in Madison County. Madison County saw a 3.4% population increase between 2010 and 2018. Winterset's population is predominantly White. Between 2000 and 2010 there was a slight decrease in the percent of White population.

Total Population

	2000 ¹	2010 ¹	2018 ²
Winterset	4,768	5,190	5,307
Male	2,210	2,418	Not Available*
Female	2,558	2,772	Not Available*
Madison County	14,019	15,679	16,206
State of Iowa	2,926,324	3,046,355	3,156,145

* population estimates by sex not provided at the city level

Percentage of Population by Race/Hispanic Origin¹

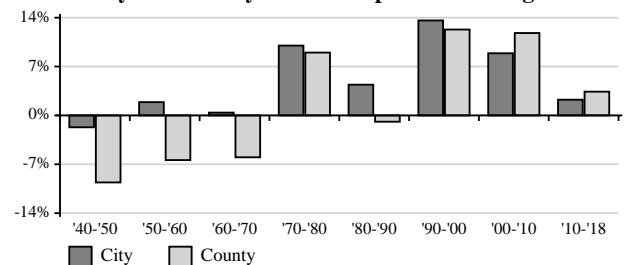
Race Groups	City		County	
	2000	2010	2000	2010
One Race Only	99.5%	99.3%	99.3%	99.1%
White	98.9%	98.1%	98.6%	98.1%
White Alone, Not Hispanic	98.5%	96.6%	98.2%	97.2%
Black or African American	0.1%	0.2%	0.1%	0.3%
Asian	0.3%	0.4%	0.2%	0.3%
American Indian or Alaska Native	0.1%	0.2%	0.3%	0.2%
Hawaiian or Pacific Islander	0%	0%	0%	0%
Other	0.1%	0.4%	0.2%	0.2%
Two or more races	0.5%	0.7%	0.7%	0.9%
Hispanic origin*	0.6%	2%	0.7%	1.3%

* Hispanics can be of any race.

Neighboring Cities - Percent Population Change

	'90 ¹ -'00 ¹	'00 ¹ -'10 ¹	'10 ¹ -'18 ²
Bevington	-13.43%	8.62%	9.52%
Earlham	12.19%	11.71%	-2.55%
East Peru	15.91%	-18.30%	4.00%
Patterson	-1.56%	3.17%	24.62%
St. Charles	15.27%	5.49%	-4.90%
Winterset	13.63%	8.85%	2.25%
Madison County	12.30%	11.84%	3.36%
State of Iowa	5.39%	4.10%	3.60%

City and County Percent Population Change



Regional Director

Brooke Blessington
200 W 2nd Avenue, Suite A
Indianola, IA 50125
bbless@iastate.edu
515-961-6237

County Office

Brooke Blessington
117 N John Wayne Dr
Winterset, IA 50273
bbless@iastate.edu
515-462-1001

<http://indicators.extension.iastate.edu>

Demographic Profile

Winterset, Iowa

The City of Winterset, compared to Madison County, had a lower percentage of young people (17 or younger) and a higher percentage of older people (65 and older) in 2010. Population pyramids⁶ visually graph the age-sex composition of the population for Winterset and Madison County. Each bar represents the percent of the total population for each age-sex group.

Households and Families by Type¹

	City		County	
	2000	2010	2000	2010
Total Households	1,884	2,062	5,326	6,025
Family Households	65.3%	64.8%	73.7%	73.2%
With Children	32.9%	31.5%	34.8%	33.6%
Married-couple	53.1%	51.5%	63.9%	62.3%
With Children	24%	23.3%	28.5%	26.7%
Female Householder ^a	9.9%	9.9%	7%	7.3%
With Children	7.3%	6%	4.7%	4.7%
Male Householder ^b	2.3%	3.3%	2.8%	3.6%
With Children	1.6%	2.2%	1.6%	2.2%
Nonfamily Households	34.7%	35.2%	26.3%	26.8%
Householder Living Alone	31.5%	31.7%	22.7%	23%
Householder Not Living Alone	3.2%	3.5%	3.6%	3.8%
Households With Under 18 ^c	34.3%	33.7%	36.6%	35.6%
Households With 65+ ^d	32.2%	30%	25.9%	25.6%
Average Household Size	2.39	2.42	2.58	2.57

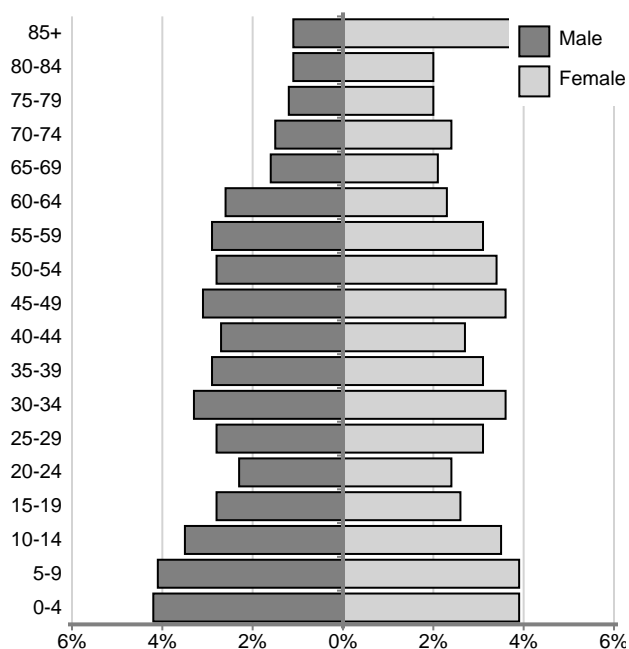
^aNo husband present, ^bNo wife present ^cHouseholds with individuals under 18 years ^dHouseholds with individuals 65 years and over

Percentage of Population by Age¹

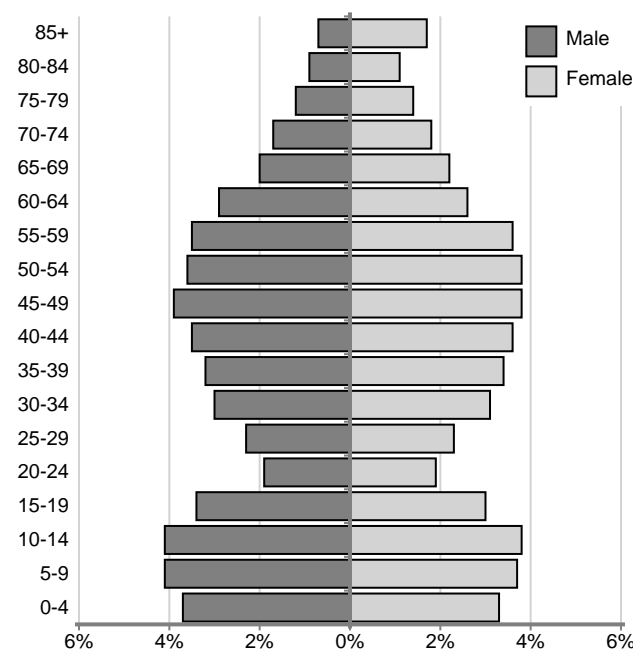
Age Groups	City		County	
	2000	2010	2000	2010
17 or younger	25.8%	26.8%	27.1%	27.2%
0 - 4	6.9%	8.1%	14.4%	14.8%
5 - 9	6.8%	8.0%	7.4%	7.8%
10 - 14	7.1%	7.0%	7.9%	7.9%
15 - 17	5.0%	3.7%	5.3%	4.6%
18 - 24	7.3%	6.4%	6.9%	5.7%
25 - 44	25.5%	24.3%	27.4%	24.5%
45 - 64	20.3%	23.9%	23.4%	27.8%
65 or older	21.0%	18.6%	15.2%	14.8%
65 - 84	15.1%	13.9%	12.4%	12.4%
85 or older	5.9%	4.7%	2.8%	2.4%
Median Age (years) ⁴	38.6	38.4	37.9	39.8
Age Dependency ⁵	88.1	83.3	73.3	72.4
Old-Age	39.5	34.1	26.3	25.5
Child	48.6	49.2	47.0	46.9

⁵Age Dependency Ratio

Winterset, Iowa Population Pyramid, 2010^{1,6}



Madison County Population Pyramid, 2010^{1,6}



The median⁴ household income in Winterset is less than the median household income of Madison County. The median value of owner-occupied housing units is lower in Winterset than for Madison County. There's a lower percentage of vacant housing units in Winterset than there is for Madison County. Many housing units in Winterset were built prior to 1940. There is a higher percentage of individuals 25 and older with a Bachelor's degree or higher in Winterset compared to Madison County.

Median Household and Per Capita Income, 2014-2018³

	City		County	
	Estimate	MOE*	Estimate	MOE*
Total Households	2,136	+/- 155	6,309	+/- 187
Less than \$34,999	32.0%	+/- 4.1%	24.3%	+/- 2.7%
\$35,000 To \$49,999	14.4%	+/- 6.2%	12.4%	+/- 2.7%
\$50,000 To \$99,999	31.8%	+/- 3.4%	37.7%	+/- 2.3%
\$100,000 Or More	21.8%	+/- 3.2%	25.5%	+/- 2.3%
Median Household Income ⁴	\$52,636	+/- \$6,938	\$64,512	+/- \$4,408
Median Family Income ⁴	\$72,955	+/- \$15,385	\$75,144	+/- \$5,966
Per Capita Income	\$27,952	+/- \$3,351	\$33,069	+/- \$2,864

Housing Characteristics, 2014-2018³

	City		County	
	Estimate	MOE*	Estimate	MOE*
Total Units	2,298	+/- 163	6,883	+/- 47
Vacant	7.0%	+/- 5.3%	8.3%	+/- 2.7%
Occupied	93.0%	+/- 5.3%	91.7%	+/- 2.7%
Occupied ^a	2,136	+/- 155	6,309	+/- 187
Owner	70.2%	+/- 7.1%	78.5%	+/- 3.5%
Renter	29.8%	+/- 7.1%	21.5%	+/- 3.5%
Rent ^{b,4}	\$767	+/- \$107	\$813	+/- \$70
Value ^{c,4}	\$145,000 +/- \$12,798		\$166,500 +/- \$6,074	

^aOccupied Units, ^bMedian gross rent of renter-occupied units, ^cMedian value of owner-occupied units

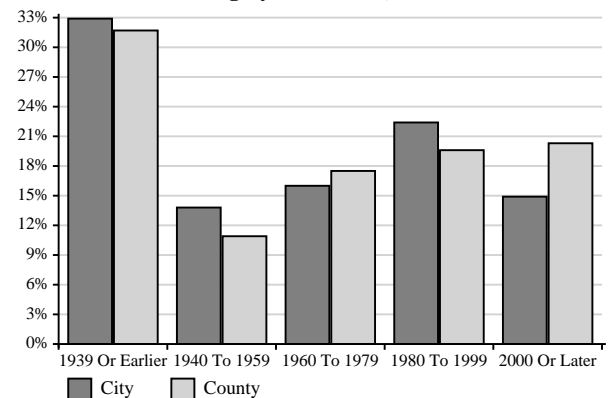
Educational Attainment, 2014-2018³

	City		County	
	Estimate	MOE*	Estimate	MOE*
Population 25 and older	3,434	+/-153	10,767	+/-28
High School Graduate or Higher	93%	+/-2.9%	94.9%	+/-1.1%
Bachelor's Degree or Higher	25.7%	+/-6.8%	23.9%	+/-2.7%

*MOE = the margin of error for American Community Survey estimates³ which is a numerical value that when added to or subtracted from the point estimate value gives the range of a 90% confidence interval around the estimate.

**MOE is high, use county estimate.

Percent Housing by Year Built, 2014-2018³



In Winterset there is a higher percentage of workers in management, business, science, and arts occupations than any other occupation category. The production, transportation, and material moving occupation category makes up 18.2% of occupations of the civilian employed population in the city.

Occupation of the Civilian Employed Population, 2014-2018³

	City		County	
	Estimate	MOE*	Estimate	MOE*
Civilian employed population 16 years and over	2,596	+/- 218	8,363	+/- 213
Management, business, science, and arts	36.7%	+/- 7.7%	38.3%	+/- 3.1%
Service	19.7%	+/- 6.3%	15.1%	+/- 2.4%
Sales and office	19%	+/- 6%	18.2%	+/- 2.4%
Natural resources, construction, and maintenance	**%	+/- **%	13.6%	+/- 2.1%
Production, transportation, and material moving	18.2%	+/- 6.9%	14.7%	+/- 2.8%

Winterset has a lower proportion of the population age 16 or older in the labor force than Madison County. A portion of those who are not in the labor force are people who are retired. Earnings data are provided for the population 16 and over who have earnings. Median⁴ earnings in Winterset tend to be lower than the median earnings for Madison County. Families with children tend to have a higher rate of poverty than families without children.

Median Employment Earnings, 2014-2018³

	City		County	
	Estimate	MOE*	Estimate	MOE*
Population 16+ ^a	2,856	+/- 211	9,218	+/- 214
Median Earnings	\$35,319	+/- \$4,651	\$37,458	+/- \$2,642
Female	\$20,764	+/- \$10,321	\$27,621	+/- \$4,703
Female, full time ^b	\$43,611	+/- \$7,968	\$44,785	+/- \$3,888
Male	\$41,722	+/- \$5,984	\$44,839	+/- \$2,346
Male, full time ^b	\$50,091	+/- \$7,745	\$52,942	+/- \$2,812

^a with earnings, ^b year round, ****MOE is high, use county estimate.**

Disability Status and Health Insurance Coverage of the Civilian Noninstitutionalized Population, 2014-2018³

	City		County	
	Estimate	MOE*	Estimate	MOE*
Population ^a	5,037	+/-89	15,712	+/-83
With a disability ^b	17.9%	+/-4.1%	12.6%	+/-1.5%
With Health Insurance	96.0%	+/-2.2%	96.6%	+/-1.0%
With Private ^c Coverage	81.4%	+/-4.7%	83.5%	+/-2.1%
With Public ^d Coverage	28.4%	+/-5.4%	27.7%	+/-2.0%
No Health Insurance	4.0%	+/-2.2%	3.4%	+/-1.0%

^aCivilian Noninstitutionalized Population, ^blimitations of activities or inability for full participation, ^cprovided by employer, union, bought by individual, and some military plans, ^dincludes Medicare, Medicaid, VA Health Care, children's CHIP, and some state plans, ****MOE is high, use county estimate.**

Employment Status, 2014-2018³

	City		County	
	Estimate	MOE*	Estimate	MOE*
Population 16+	4,008	+/- 150	12,347	+/- 77
in labor force	67.7%	+/- 5.0%	70.6%	+/- 1.5%
not in labor force	32.3%	+/- 5.0%	29.4%	+/- 1.5%
Civilian labor force	2,715	+/- 211	8,707	+/- 192
Unemployed	**%	+/- **%	4.0%	+/- 1.5%

****MOE is high, use county estimate.**

Individuals and Families Below Poverty Level, 2014-2018³

	City		County	
	Estimate	MOE*	Estimate	MOE*
Total Population ^a	5,002	+/-105	15,681	+/-96
Below poverty	9.2%	+/-3.8%	6.7%	+/-1.7%
17 and under	**%	+/-**%	**%	+/-**%
18 - 64	**%	+/-**%	**%	+/-**%
65+	**%	+/-**%	8.4%	+/-3.9%
All Families	**%	+/-**%	3.4%	+/-1.4%
with children	**%	+/-**%	**%	+/-**%
Married Couple	**%	+/-**%	2.7%	+/-1.3%
with children	**%	+/-**%	**%	+/-**%
Female HH ^b	**%	+/-**%	**%	+/-**%
with children	**%	+/-**%	**%	+/-**%

^a for whom poverty status is determined, ^b female householder, no husband present, ****MOE is high, use county estimate.**

This series was prepared by:

Christopher J. Seeger, Professor & Extension Specialist
 Bailey Hanson, Systems Analyst II & Extension Specialist
 Sandra Burke, Assistant Scientist III & Extension Specialist

For more information on these and other topics, please call the Extension and Outreach specialists listed on the cover page or visit the ISU Extension and Outreach Indicators Portal at indicators.extension.iastate.edu

Iowa State University Extension and Outreach does not discriminate on the basis of age, disability, ethnicity, gender identity, genetic information, marital status, national origin, pregnancy, race, color, religion, sex, sexual orientation, socioeconomic status, or status as a U.S. veteran, or other protected classes. (Not all prohibited bases apply to all programs.) Inquiries regarding non-discrimination policies may be directed to the Diversity Advisor, 2150 Beardshear Hall, 515 Morrill Road, Ames, Iowa 50011, 515-294-1482, extdiversity@iastate.edu. All other inquiries may be directed to 800-262-3804.

Information in this document was derived from:

- ¹ U.S. Census Bureau; Decennial Census 1990, 2000, 2010 Summary File 1
- ² U.S. Census Bureau; Population Estimates Program 2018
- ³ U.S. Census Bureau; American Community Survey, 2014-2018
- ⁴ Median is the middle value of a distribution.
- ⁵ Compares, those typically not in the labor force with those typically in the labor force. Old Age dependency is persons 65+ per 100 persons age 18-64. Child dependency is persons under age 18 per 100 persons age 18-64. The total age dependency ratio is persons under age 18 plus persons 65 or older per 100 persons age 18-64.
- ⁶ Population Pyramids represent the age-sex composition of a population. Bars may be missing if particular age-sex groups are missing from the population.